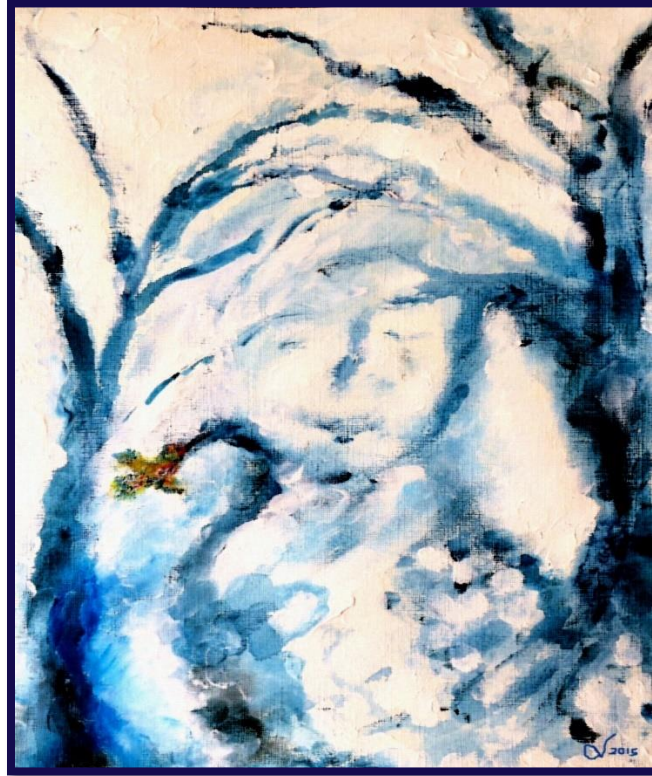


WISDOM GODDESS

REFERENCE GUIDE

SPECIAL EDITION – DECEMBER 2016



"26 Gemini: Winter Frost in the Woods" Christine Vincent © 2015

Laura Walker

ORACLE REPORT ACADEMY

© 2016. All rights reserved.

TABLE OF CONTENTS

THE TEN WISDOM GODDESSES

KALI	3
TARA	3
SHODASHI	4
CHINNAMASTA	4
BHUVANESHVARI	5
MATANGI	5
BHAIRAVI	6
BAGALAMUKHI	6
DHUMAVATI	7
KAMALA	7

RULERSHIP LISTS

ELEMENTS	8
COLORS	8
TOPOGRAPHY	8
SUBJECTS	9
TREES	9
BIRDS	10
REPTILES & INSECTS	11
SEA LIFE	11
MAMMALS	12

KALI

Goddess of Endings and Beginnings

Goddess of Time

The Destroyer

The Reckoner

ELEMENT:	air
COLOR:	black
TOPOGRAPHY:	tundra
SUBJECT:	physics, astronomy
TREE:	oak
BIRDS:	blackbird, chickadee, crow
REPTILES & INSECTS:	alligator, beetle, butterfly, crocodile, serpent, snake
SEA LIFE:	mermaid, merman, shark
MAMMALS:	bat, cat, goat, leopard, polar bear, possum

TARA

Goddess Who Guides Through Troubles

Goddess of Compassion

The Protector

The Liberator

ELEMENT:	earth
COLOR:	green
TOPOGRAPHY:	rainforest
SUBJECT:	biology
TREE:	birch
BIRDS:	hawk, parakeet, pigeon, quail
REPTILES & INSECTS:	caterpillar, snail
SEA LIFE:	coral
MAMMALS:	camel, kangaroo, manatee, mole, panda bear, rabbit, walrus

SHODASHI

Goddess Who Aligns Us with the Highest and Best

Goddess of Beauty

Goddess Who Destroys the Demiurge

The Multitasker

ELEMENT:	fire
COLOR:	red, pink
TOPOGRAPHY:	desert
SUBJECT:	harmonics, metaphysics
TREE:	willow
BIRDS:	bluebird, eagle, goose, heron, woodpecker
REPTILES & INSECTS:	dragonfly, gecko, spider
SEA LIFE:	jellyfish, starfish
MAMMALS:	brown bear, dog, dolphin, giraffe, horse, seal, wolf

CHINNAMASTA

Goddess Who Expands the Mind

Goddess of Truth

The Bringer of Blessings

The Remover of Obstacles

ELEMENT:	air
COLOR:	white
TOPOGRAPHY:	island
SUBJECT:	psychology
TREE:	elm
BIRDS:	falcon, osprey, penguin, pheasant, roadrunner, sparrow, wren
REPTILES & INSECTS:	firefly, lizard
SEA LIFE:	mussel
MAMMALS:	bison, fox, hedgehog, otter, ram

BHUVANESHVARI

Goddess Whose Body is the World

Goddess of Peace

Goddess of Speech

The World Nurse

ELEMENT:	earth
COLOR:	orange
TOPOGRAPHY:	prairie
SUBJECT:	geology
TREE:	maple
BIRDS:	barred owl, conure, dove, macaw
REPTILES & INSECTS:	grasshopper, tick, turtle
SEA LIFE:	seahorse
MAMMALS:	beaver, gazelle, ox, prairie dog, zebra

MATANGI

Goddess of the Wind

Goddess Who Purges and Clears

The Administrator

The Advocate

ELEMENT:	air
COLOR:	violet
TOPOGRAPHY:	mountain
SUBJECT:	sociology
TREE:	walnut
BIRDS:	canary, goldfinch, oriole, stork
REPTILES & INSECTS:	ant, iguana
SEA LIFE:	octopus
MAMMALS:	caribou, chipmunk, deer, elephant, jaguar, koala bear, mouse, orangutan, panther, porcupine, racoon

BHAIRAVI

Goddess Who Fortifies the Heart

Goddess Who Inspires Heroism

The Fierce One

The Golden Goddess

ELEMENT:	fire
COLOR:	gold
TOPOGRAPHY:	beach
SUBJECT:	chemistry
TREE:	redwood
BIRDS:	cardinal, flamingo
REPTILES & INSECTS:	cricket, wasp
SEA LIFE:	clam
MAMMALS:	cougar, elk, gorilla, lion, whale

BAGALAMUKHI

Goddess Who Solves

Goddess of Smoke

The Stabilizer

The Paralyzer of Enemies

ELEMENT:	fire
COLOR:	yellow
TOPOGRAPHY:	steppe
SUBJECT:	meteorology
TREE:	cedar
BIRDS:	blue jay, parrot, seagull, turkey
REPTILES & INSECTS:	fly, komodo dragon, scorpion
SEA LIFE:	squid
MAMMALS:	chimpanzee, llama, rhinoceros, skunk, tiger

DHUMAVATI

The Goddess Who Sorts and Winnows

Goddess of Death

Goddess Who Closes Out

The Closer

ELEMENT:	water
COLOR:	indigo
TOPOGRAPHY:	marsh
SUBJECT:	history
TREE:	ash
BIRDS:	chicken, mockingbird, rooster
REPTILES & INSECTS:	praying mantis, tadpole
SEA LIFE:	crab
MAMMALS:	bobcat, coyote, moose, sea lion, squirrel

KAMALA

Goddess Who Transcends Limitations

Goddess Who Leaves No One Behind

The Lotus Goddess

The Enchantress

ELEMENT:	water
COLOR:	blue
TOPOGRAPHY:	valley
SUBJECT:	anthropology
TREE:	pine
BIRDS:	condor, hummingbird, ibis, peacock, pelican, robin, swan
REPTILES & INSECTS:	bee, centipede, moth
SEA LIFE:	stingray
MAMMALS:	bull, hamster, rat

ELEMENTS

fire	Shodashi, Bhairavi, Bagalamukhi
earth	Tara, Bhuvaneshvari
air	Kali, Chinnamasta, Matangi
water	Dhumavati, Kamala

COLORS

black	Kali
blue	Kamala
gold	Bhairavi
indigo	Dhumavati
orange	Bhuvaneshvari
pink, red	Shodashi
violet	Matangi
white	Chinnamasta
yellow	Bagalamukhi

TOPOGRAPHY

beach	Bhairavi
desert	Shodashi
island	Chinnamasta
marsh	Dhumavati
mountain	Matangi
prairie	Bhuvaneshvari
rainforest	Tara
steppe	Bagalamukhi
tundra	Kali
valley	Kamala

SUBJECTS

anthropology	Kamala
astronomy, physics	Kali
biology	Tara
chemistry	Bhairavi
geology	Bhuvaneshvari
harmonics, metaphysics	Shodashi
history	Dhumavati
meteorology	Bagalamukhi
psychology	Chinnamasta
sociology	Matangi

TREES

ash	Dhumavati
birch	Tara
cedar	Bagalamukhi
elm	Chinnamasta
maple	Bhuvaneshvari
oak	Kali
pine	Kamala
redwood	Bhairavi
walnut	Matangi
willow	Shodashi

KL	Kali	M	Matangi
T	Tara	BR	Bhairavi
S	Shodashi	BG	Bagalamukhi
C	Chinnamasta	D	Dhumavati
BV	Bhuvaneshvari	KM	Kamala

BIRDS

barred owl – BV	mockingbird - D
blackbird – KL	oriole - M
blue jay – BG	osprey - C
bluebird – S	parakeet - T
canary – M	parrot - BG
cardinal – BR	peacock - KM
chickadee – KL	pelican - KM
chicken – D	penguin - C
condor – KM	pheasant - C
conure – BV	pigeon - T
crow – KL	quail - T
dove – BV	roadrunner - C
eagle – S	robin - KM
falcon – C	rooster - D
flamingo – BR	seagull - BG
goldfinch – M	sparrow - C
goose – S	stork - M
hawk – T	swan - KM
heron – S	turkey - BG
hummingbird – KM	woodpecker - S
ibis – KM	wren - C
macaw – BV	

KL Kali
T Tara
S Shodashi
C Chinnamasta
BV Bhuvaneshvari

M Matangi
BR Bhairavi
BG Bagalamukhi
D Dhumavati
KM Kamala

REPTILES & INSECTS

alligator - KL
ant - M
bee - KM
beetle - KL
butterfly - KL
caterpillar - T
crocodile - KL
centipede - KM
cricket - BR
dragonfly - S
firefly - C
fly - BG
frog - KM
gecko - S
grasshopper - BV

iguana - M
komodo dragon - BG
lizard - C
moth - KM
praying mantis - D
scorpion - BG
serpent - KL
snail - T
snake - KL
spider - S
tadpole - D
tick - BV
turtle - BV
wasp - BR

SEA LIFE

clam - BR
coral - T
crab - D
jellyfish - S
mermaid - KL
merman - KL
mussel - C

octopus - M
sea turtle - BR
seahorse - BV
shark - KL
squid - BG
starfish - S
stingray - KM

KL	Kali	M	Matangi
T	Tara	BR	Bhairavi
S	Shodashi	BG	Bagalamukhi
C	Chinnamasta	D	Dhumavati
BV	Bhuvaneshvari	KM	Kamala

MAMMALS

bat - KL	giraffe - S	panther - M
beaver - BV	goat - KL	polar bear - KL
bison - C	gorilla - BR	porcupine - M
bobcat - D	hamster - KM	possum - KL
brown bear - S	hedgehog - C	prairie dog - BV
bull - KM	horse - S	rabbit - T
camel - T	jaguar - M	raccoon - M
caribou - M	kangaroo - T	ram - C
cat - KL	koala bear - M	rat - KM
chimpanzee - BG	leopard - KL	rhinoceros - BG
chipmunk - M	lion - BR	sea lion - D
cougar - BR	llama - BG	seal - S
coyote - D	manatee - T	skunk - BG
deer - M	mole - T	squirrel - D
dog - S	moose - D	tiger - BG
dolphin - S	mouse - M	walrus - T
elephant - M	orangutan - M	whale - BR
elk - BR	otter - C	wolf - S
fox - C	ox - BV	zebra - BV
gazelle - BV	panda bear - T	